

**FA Challenge Cup with Budweiser
Extra Preliminary Round – Replay
Wednesday 21 August 2013 – Kick-off 7.30pm.**

Epsom & Ewell (Royal blue and white shirts, Blue shorts)		v.	Whyteleafe (Green shirts, White shorts)	
1	Keiron CAMPBELL		1	David WILLIAMS
2	Sam CURRIE		2	Tom PRATT
3	Jamie HATFIELD (Capt)		3	Tommy SMITH
4	Anthony PANAYI		4	Aaron LEACOCK
5	Alex McKAY		5	Cedric ABRAHAM
6	Karl DOUGHLIN		6	Jason THOMPSON
7	Ben HAYWARD		7	Calvin HEADLEY
8	Carl DOWNS		8	Jensen GRANT
9	Robbie BURNS		9	Taylor SMITH
10	Kyle HOUGH		10	Gareth WILLAIMS
11	Antony MYERS		11	Bentley GRAHAM
12	Matt SMITH		12	Adam BROOMHEAD
14	James TAYLOR		14	Mark HYNES
15	Jordayne HENRY		15	Ryan FOWLER
16	Richard LEDIJU		16	Josh READ
17	Reece JACKSON		17	Lewis DAVID
18			18	
Manager: Lyndon Buckwell Assistants: Glynn Mandeville and Tony Coombe Player-Coach: Russell Banyard Physio: Ken Jones			Manager: John Fowler Assistant: Dean Davenport Coach: Rob Smith Physio: N/A	

Referee: Jonathan Creswick (West Byfleet)

Assistants: Peter Crichlow (Croydon), Roger Wells (Coulsdon)

**Today's match is sponsored by the Committee
The match ball is sponsored by Committee**

Next Home match

**Combined Counties - Premier Division
Epsom & Ewell v. Croydon
on Monday 26 August 2013 at 11.30am**



Welcome to

Epsom & Ewell v. Whyteleafe Wednesday 21 August 2013

Good evening everyone and welcome to High Road, Chipstead. We extend a warm welcome to our visitors from Whyteleafe, the match officials, the officials and supporters of both clubs and any casual visitors for this evening's match. We hope everyone enjoys the evening's entertainment and has a safe journey home afterwards.

Tonight's game is as a result of the two teams drawing 3-3 at Church Lane last Saturday. Whyteleafe were leading 3-1 at half time with goals from Jensen Grant (18), Jason Thompson (37 pen) and Gareth Williams (38). Epsom's goal was scored by Antony Myers (31). Epsom & Ewell fought back in the second half with strikes from Kyle Hough (51) and Reece Jackson (62). It was Reece's first goal for Epsom, since his summer move from Dorking. The winners of tonight's replay will be away to Croydon on Saturday 31 August. Croydon won 3-1 at Combined Counties League Division One side Epsom Athletic. In last season's FA Cup competition, Whyteleafe lost 1-0 in Extra Preliminary Round away to Redhill. Their best FA Cup Performance was the first round proper in the 1999-2000 season. Adding to the interest in today's game, the two clubs have been paired in the Second Qualifying Round of the FA Vase on Saturday 21 September, here at High Road, Chipstead.

Epsom & Ewell have three more League matches this month, Cove away on Saturday (3pm) and Croydon at home on Bank Holiday Monday (11.30am). The game at Ash United on Saturday 31 August will be postponed if Epsom & Ewell progress tonight. The club are looking for match, match ball and player sponsors too. Please look out for the sponsorship pages in this programme. Chairman, Tony Jeffcoate is feeling better and is continuing to improve. The cup result on Saturday was quite a tonic and he thanks everyone for their best wishes.

Epsom & Ewell Football Club Programme Team

**Cover photo of Kyle Hough's goal against Mole Valley
on Saturday 3 August 2013 by Gemma Jarman**

Match photos by Gemma Jarman



Cherry Red Records Combined Counties League Premier Division Table 2013-2014

Pos	Team	P	W	D	L	F	A	GD	Pts
1	Epsom & Ewell	4	4	0	0	8	1	+7	12
2	Windsor	4	3	1	0	11	3	+8	10
3	Hartley Wintney	4	3	1	0	9	6	+3	10
4	South Park	4	3	0	1	11	4	+7	9
5	Ash United	4	2	1	1	5	2	+3	7
6	Hanworth Villa	4	2	1	1	9	7	+2	7
7	Camberley Town	4	2	1	1	5	4	+1	7
8	Westfield	4	2	0	2	5	5	+0	6
9	Molesey	4	2	0	2	4	5	-1	6
10	Bedfont Sports	4	2	0	2	4	6	-2	6
11	Badshot Lea	4	1	2	1	4	5	-1	5
12	Farnham Town	4	1	1	2	7	7	+0	4
13	Cove	4	1	1	2	6	7	-1	4
14	Horley Town	4	1	1	2	3	5	-2	4
15	Frimley Green	4	1	1	2	7	10	-3	4
16	Mole Valley SCR	4	1	1	2	3	6	-3	4
17	Raynes Park Vale	4	1	1	2	4	10	-6	4
18	Chessington & Hook Utd	4	1	0	3	5	6	-1	3
19	Croydon	3	1	0	2	4	5	-1	3
20	Colliers Wood United	3	1	0	2	3	4	-1	3
21	Wembley	4	1	0	3	2	6	-4	3
22	Alton Town	4	0	1	3	3	8	-5	1

Table dated: Tuesday 13 August 2013

Last result: Camberley Town 0-2 Epsom & Ewell (Tue 13 Aug 2013)

Top Shots 2013-2014 Season



Alex McKay flying high as the ball hits the back of the net in the 2-1 win against Westfield on Tuesday 6 August. Photo by Gemma Jarman.

Photos below by Lauren Jarman: Anthony Panayi with some tricky footwork (left) and goal scorer Kyle Hough (right) in the match against Mole Valley SCR on Saturday 10 August.



View Lauren and Gemma Jarman's photos on the Club's website at:
<http://www.pitchero.com.clubs/epsomandewellfc>

John Ward Reflects

Despite the frustration of missing some of our early league games, a trip to Devon helped to compensate for missing Epsom & Ewell attain top spot in the Combined Counties Premier Division. It has been a magnificent start for us, and a prolonged run of success will hopefully see us in a promotion position at the end of the season (injuries and suspensions permitting).

One of the interesting things that I noticed while in Devon was the number of small but well maintained non-league football grounds. For example in Sidmouth Town. The football pitch is close to a large housing estate. The ground is open on all sides and on match days the team attract a good following! Sidmouth Town play in the South West Peninsula League Division One East.

History of the team has been dated back to 1895, when a side called Sidmouth Young Unionists were reported to play in the Victory League. Now thanks to financial support from Devon Council the team have a large clubhouse with changing rooms, although they do lack floodlights. The 'Vikings' opened their season with a 1-4 loss at home to last season's runners up Stoke Gabriel. Sidmouth run two teams along with a vets side and junior squad.

Going up a division, I also visited Exmouth Town F.C. who are based close to the sea front. The ground is compact and has a small wooden stand and a clubhouse. The club were formed in 1933 and they moved to their current home at Southern Road in 1964. Exmouth Town had plenty of local league success, as well as winning the Devon Senior Cup. They currently play in the South West Peninsula League Premier Division.

In 1984-1985 Exmouth reached the semi-final of the FA Vase, narrowly losing out to Fleetwood Town over two legs, during this period the club installed floodlights. They also hosted a number of matches against football league opponents. On 28th July 1987 they recorded their highest home attendance when they played a friendly against a Liverpool XI (2,895).

Things went wrong after the 1993-1994 season when Exmouth were relegated, however they gained promotion back to the Premier Division in 2003-2004. Life at the top was short lived and Exmouth had to withdraw from the Western League in 2005.

The club reformed and joined the Devon & Exeter League Premier Division, where they stayed for two seasons until their promotion to the South West Peninsula League Division One East for the 2007-2008 season. Last season, they won the Devon Premier Cup and gained promotion to the Premier Division. Exmouth Town have won all three of their opening League fixtures!

CCL Teams in the FA Cup

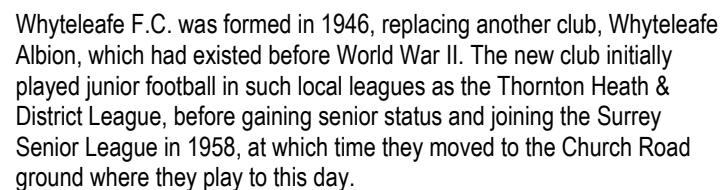
All 22 Combined Counties League Premier Division teams were in action in the FA Cup Extra Preliminary round on Saturday. Four teams from Division One (CCL1), AFC Croydon Athletic, Dorking, Epsom Athletic and Sandhurst Town were also in action. Of the 22 Premier Division teams, 16 progressed at the first time of asking with another four getting a second change with a replay this week. All four Division One sides lost their games on Saturday.

Match	Home	Score	Away	Att:
96	AFC Kempston (UCLP)	0-1	WEMBLEY	100
117	Holyport (HELP)	2-7	HANWORTH VILLA	
114	SANDHURST TOWN	2-2	FARNHAM TOWN	26
118	STAINES LAMMAS (CCL1)	0-2	BADSHOT LEA	45
120	CAMBERLEY TOWN	2-0	Chinnor (HEL1E)	75
122	FRIMLEY GREEN	3-2	ASH UNITED	61
124	BEDFONT SPORTS	2-2	Abingdon United (HELP)	50
125	WESTFIELD	2-1	Shrivenham (HELP)	70
127	COVE	5-0	Carterton (HEL1W)	32
128	Newbury (HELP)	1-4	WINDSOR	
129	Kidlington (HELP)	1-1	HARTLEY WINTNEY	
131	DORKING (CCL1)	1-4	Shoreham (SCL1)	
132	ALTON TOWN	3-1	Selsey (SCL1)	
136	Sevenoaks Town (SCEL)	1-4	HORLEY TOWN (at Horley)	
138	Whyteleafe (SCEL)	3-3	EPSOM & EWELL	118
141	MOLESEY	8-1	Hailsham Town (SCL1)	104
143	Chichester City (SCL1)	1-9	CHESSINGTON & HOOK	
145	MOLE VALLEY SCR	0-1	SOUTH PARK	26
149	EPSOM ATHLETIC (CCL1)	1-3	CROYDON	101
151	RAYNES PARK VALE	2-1	Lingfield (SCL1)	
154	COLLIERS WOOD UNITED	6-2	AFC CROYDON ATHLETIC (CCL1)	

Hellenic League Premier Division (HELP) (Step Five)
 Southern Counties East League (SCEL) (Step Five)
 Sussex County League Division One (SCL1) (Step Five)
 United Counties League Premier Division (UCLP) (Step Five)

Hellenic League Division One East (HEL1E) (Step Six)
 Hellenic League Division One West (HEL1W) (Step Six)

First Eleven Appearances and Goals



Whyteleafe were Surrey Senior League champions on at least one occasion in the 1960s before switching to the London Spartan League in 1975. In 1981 they switched to the Athenian League and then in 1984 to the Isthmian League. In 1989 they were promoted to Division One, a level at which they played for 23 years (albeit with league reorganisations placing the team in Division One South from 2002 to 2004 and again in 2006). In 1999, they reached the First Round Proper of the FA Cup for the first time in their history and held Chester City to a 0–0 draw before losing the replay. At the end of the 2011–12 season the club were relegated from the Isthmian League to the Kent League. Whyteleafe play their home games at Church Road, Whyteleafe, Surrey.

The site of Church Road was formerly farmland, and the farm's existing buildings were converted into the clubhouse and dressing rooms. The club originally planned to add a running track and cricket pitch to the complex, but these plans were abandoned. Floodlights were added in the early 1980s and a new main stand added in 1999 for the club's first round FA Cup match against Chester City, which saw a record attendance of 2,164. Some of the turnstiles added at the ground were purchased from Stoke City's Victoria Ground after they moved to the Britannia Stadium in 1997.

Whyteleafe currently play in the Southern Counties East Football League (SCEL). The league was renamed from the Kent League at the league's Annual General Meeting in June. The name was changed to reflect that the league's constitution was no longer confined to teams from the current boundaries of Kent. Whyteleafe being from Surrey is a good example. Many of the other sides are based in South East London boroughs.

Whyteleafe FC's results so far this season:

Date	Opponents	H/A	Score	Comp	Att:
Saturday 10 August	ROCHESTER UNITED	Home	D 2-2	SCEL	65
Tuesday 13 August	Beckenham Town	Away	W 2-1	SCEL	120
Saturday 17 August	EPSOM & EWELL	Home	D 3-3	FAC EP	118

[illegible]

Up to and including: Saturday 17 August 2013 (Five games). * No longer at the club.

This Season's Match Sponsors

Opponent	Date	Match Sponsor	Ball Sponsor
Westfield	06.08.2013	Epsom & Ewell FC Committee	
Whyteleafe (FA Cup)	21.08.2013	"Boys at the half-way line"	Peter Beddoe
Croydon	26.08.2013	Marvin Hough	
Raynes Park Vale	03.09.2013		
Bedfont Sports	07.09.2013		
Whyteleafe (FA Vase)	21.09.2013		
Wembley	24.09.2013		
Badshot Lea	05.10.2013		
Frimley Green	19.10.2013	The Jarman Family	
Hartley Wintney	26.10.2013		
Chessington & Hook	16.11.2013		
Mole Valley SCR	30.11.2013	In Memory of Doug and Liz Burns	
Windsor	21.12.2013		
Horley Town	28.12.2013		
Farnham Town	11.01.2014		
Alton Town	25.01.2014		
Cove	08.02.2014		
Molesey	01.03.2014	John Herbert	
Colliers Wood United	08.03.2014	Joe Hagan P.G.A. Golf Professional 01932 267666	
Ash United	22.03.2014		
Camberley Town	05.04.2014		
South Park	19.04.2014		
Hanworth Villa	26.04.2014		

If you like to sponsor a match or the match ball this season, please contact a Committee Member for details. Cost £40 (match) includes two free tickets and two matchday programmes, £25 (match ball) includes one free ticket and one matchday programme.

Epsom & Ewell Football Club
would like to thank all the above sponsors for their support!

League Match Report

Epsom & Ewell 2-1 Westfield

Combined Counties League Premier Division – Tuesday 6 August 2013

Epsom & Ewell continued their winning start to the season, with a resilient performance against newly promoted Westfield at Chipstead last Tuesday evening.

Westfield played attacking football in the early stages of the game forcing a number of corners, however the 'home' side defended well and Kieran Campbell the Epsom goalkeeper was alert to the early attacks.

Westfield came close to taking the lead when Max Blackmore headed narrowly over the bar. Epsom counter attacked and were unlucky not to score when, following a corner, the ball bobbed around in the Westfield penalty but was eventually cleared.

Despite Westfield attacking, it was Epsom who came close to scoring when Alex McGregor tested the Westfield 'keeper with a fierce looping shot.

Epsom eventually broke the deadlock after 28 minutes, when Alex McKay headed home a Ben Hayward free kick. Epsom supporters thought that, just prior to half time, they had a second goal but Karl Doughlin's shot went narrowly wide and hit the side netting!

Half-Time: Epsom & Ewell 1-0 Westfield.

Epsom started the second half on the attack, and Reece Jackson had a close range shot well saved by the Westfield 'keeper!

The home side eventually doubled their lead, when, following a Kyle Hough corner, the ball was played into the Westfield penalty area and Alex McKay managed to score his second goal from close range, in the 50th minute.

Westfield missed an opportunity to score when Max Blakemore headed the ball into the side netting, with only Campbell to beat. As the game wore on, Westfield were well marshalled by the Epsom defence, and in particular Campbell in the Epsom goal. Westfield put the game on a 'knife edge' in the closing stages when Daryl Hennessy placed a well-directed shot past the Salts' defence.

Full-time: Epsom & Ewell 2-1 Westfield.

Match report by John Ward.

League Match Report (Continued)

Mole Valley SCR 0-1 Epsom & Ewell

Combined Counties League Premier Division – Saturday 10 August 2013

Epsom & Ewell wore down the challenge from Mole Valley to make it three out of three to take second place in the early stages of the Combined Counties Premier Division Season.

The early exchanges produced few clear cut chances for either side as the hard working home side chased everything. Epsom were struggling to get their passing game together in the first half hour but still had a few threatening moments. A good run along the by-line by Alex McGregor resulted in a shot saved.

Mole Valley started to make significant chances after the half hour mark keeping Epsom 'keeper Kieran Campbell busy. He was stretched the most in tipping over Joe Goodman's fierce long shot. It could be viewed as slightly against the run of play at that time when the Salts took the lead. Robbie Burns put a ball over the top into space behind the full back and Alex McGregor latched onto it lobbing confidently over the onrushing keeper Leigh Bowden.

Half-Time: Mole Valley SCR 0-1 Epsom & Ewell.

In the second half, Epsom & Ewell had more of the game with all the chances in the first section of the half. Kyle Hough was brought down in the box having been played in by Alex McGregor. He got up to slot home the penalty with his usual coolness. Hough became more influential as the game wore on having a couple of lobs of the 'keeper saved. His second goal in the 72nd minute owed a lot to the skill and persistence of Nathan Ayling who squeezed his way through to the by-line and cut it back for Hough to finish.

There was one other close moment, sub Jordayne Henry was tripped as he ran into the box shortly after coming on. From where I was sitting, it looked inside the box but referee John Ryan gave a free kick right on the edge which was blocked.

The target then for the team was to preserve the clean sheet and they nearly gave it away in the last few minutes. Kieran Campbell saved bravely at a Mole Valley forward's feet and a couple of minutes later he saved a penalty from Mole Valley's top striker Phil Page after a rash challenge in the box earned sub George Murphy a quick booking after coming on.

Full Time: Mole Valley SCR 0-3 Epsom & Ewell.

Match report by Steve Dyke.

Player Sponsorship (Cont.)



Ben Hayward

Awaiting sponsor



Alex McGregor

Awaiting sponsor



Kyle Hough

Awaiting sponsor



Carl Downs

Awaiting sponsor



Ali Dewar

Awaiting sponsor



Mark Jarman

Awaiting sponsor



Karl Doughlin

Awaiting sponsor



Reece Jackson

Awaiting sponsor



Matt Smith

Awaiting sponsor



Russell Hart

Awaiting sponsor



Richard Lediju

Awaiting sponsor



Robbie Burns

Awaiting sponsor

If you would like to sponsor a player this season, please speak to a member of the Committee. Cost per player £40 for the season.

Player Sponsorship



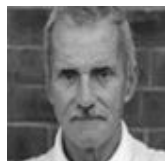
Lyndon Buckwell
(Manager)

Awaiting Sponsor



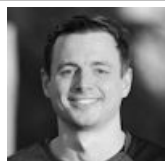
Glynn Mandeville
(Assistant Manager)

Awaiting sponsor



Ken Jones
(Physio)

Awaiting sponsor



Jamie Hatfield
(Captain)
Pete Lumm,
Joe Hagen PGA Golf
01932 267666



Sam Currie

Awaiting Sponsor



Alex McKay

Awaiting Sponsor



Tony Coombe
(Assistant Manager)

Awaiting sponsor



Russell Banyard
(Player-Coach)

Awaiting sponsor



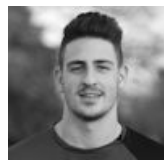
Jamie McConnell
(Kit man)

Awaiting sponsor



Kieran Campbell
(Goalkeeper)

Awaiting sponsor



Anthony Panayi

Awaiting sponsor



Nathan Ayling

Awaiting sponsor

If you would like to sponsor a player this season, please speak to a member of the Committee. Cost per player £40 per season.

The Manager

Here we go again for Epsom v Whyteleafe 'Take 2'. Saturday was definitely a game of two halves with Whyteleafe coming out on top in the first half going into the break 3-1 up, then second half we changed the shape and the personnel and we looked a different side, getting it back to 3-3 with goals from Kyle Hough and new signing Reece Jackson, Anthony 'Freddie' Myers had two chances to win the tie but I think he was still thinking about his goal from the first half, saying that, Whyteleafe had a couple of chances as well so a draw was probably a fair result. At least we know who we've got in the next round with the winners going to Croydon
Enjoy the game

Lyndon



Southern Counties East League Table

Pos	Team	P	W	D	L	F	A	GD	Pts
1	Phoenix Sports	3	3	0	0	6	3	+3	9
2	Ashford United	2	2	0	0	7	4	+3	6
3	Cray Valley PM	2	1	1	0	4	1	+3	4
4	Erith Town	2	1	1	0	4	1	+3	4
5	Tunbridge Wells	2	1	1	0	4	3	+4	4
6	Whyteleafe	2	1	1	0	4	3	+1	4
7	Corinthian	2	1	0	1	4	3	+1	3
8	Holmesdale	2	1	0	1	4	4	+0	3
9	Canterbury City	2	1	0	1	2	2	+0	3
10	Deal Town	2	1	0	1	3	4	-1	3
11	Rochester United	2	0	1	1	3	4	-1	1
12	Lordwood	2	0	1	1	3	4	-1	1
13	Woodstock Sports	2	0	1	1	3	4	-1	1
14	Greenwich Borough	2	0	1	1	3	6	-3	1
14	Beckenham Town	2	0	0	2	3	5	-2	0
16	Sevenoaks Town	1	0	0	1	2	4	-2	0
17	Fisher	2	0	0	2	1	7	-6	0

Up to and including matches played on Wednesday 14 August 2013.

Fixtures, Results and Line-ups 2013-2014

Key: CCL – Combined Counties League Premier Division, **CCL PCC** – Combined Counties League Premier Challenge Cup, **FAC** – FA Challenge Cup, **FAV** – FA Challenge Vase, **SSC** – Surrey Senior Cup
 Number in brackets after name denotes player who was substituted. Epsom & Ewell score noted first.

No	DATE	DAY	COMP	H/A	OPPONENTS	F/T	90m	H/T	SCORERS	1	2	3	4	5	6	7	8	9	10	11	SUB 1	SUB 2	SUB 3	ATT
1	03.08.2013	Sat	CCLP	A	Alton Town	1-0		0-0	Panayi	Campbell	Currie	Hatfield	Panayi	McKay	Ayling	Hayward	Doughlin	Jackson	Hough	McGregor	Smith	Marvell		97
2	06.08.2013	Tue	CCLP	H	WESTFIELD	2-1		1-0	McKay (2)	Campbell	Currie	Hatfield	Panayi	McKay	Ayling	Hayward	Doughlin	Jackson	Hough	McGregor	Smith	Burns		71
3	10.08.2013	Sat	CCLP	A	Mole Valley SCR	3-0		2-0	McGregor, Hough 2 (1 pen)	Campbell	Currie	Hatfield	Panayi	Hartt	Ayling	Hayward	Downs	Burns	Hough	McGregor	Myers	Henry	Murphy	43
4	13.08.2013	Tue	CCLP	A	Camberley Town	2-0		0-0	Dewar, Hough	Campbell	Currie	Hatfield	Panayi	McKay	Ayling	Hayward	Downs	Burns	Hough	Dewar	Lediju			91
5	17.08.2013	Sat	FAC EP	A	Whyteleafe	3-3		1-3	Myers, Hough, Jackson	Campbell	Currie	Hatfield	Panayi	Murphy	Doughlin	Hayward	Downs	Burns	Hough	Myers	Jackson	Smith		118
6	21.08.2013	Wed	FAC EPR	H	WHYTELEAFE (1930)																			
7	24.08.2013	Sat	CCLP	A	Cove																			
8	26.08.2013	Mon	CCLP	H	CROYDON (1130)																			
9	31.08.2013	Sat	CCLP	A	Ash United (or FAC P)																			
10	03.09.2013	Tue	CCLP	H	RAYNES PARK VALE (1945)																			
11	07.09.2013	Sat	CCLP	H	BEDFONT SPORTS																			
12	10.09.2013	Tue	CCL PCC1	A	Horley Town (1945)																			
13	21.09.2013	Sat	FAV 2Q	H	WHYTELEAFE																			
14	24.09.2013	Tue	CCLP	H	WEMBLEY (1945)																			
15	28.09.2013	Sat	CCLP	A	Windsor																			
16	05.10.2013	Sat	CCLP	H	BADSHOT LEA																			
17	12.10.2013	Sat	CCLP	A	Farnham Town																			
18	19.10.2013	Sat	CCLP	H	FRIMLEY GREEN																			
19	23.10.2013	Tue	SSC 1	H	CHERTSEY TOWN (Provisional date)																			
20	26.10.2013	Sat	CCLP	H	HARTLEY WINTNEY																			
21	02.11.2013	Sat	CCLP	A	Hanworth Villa																			
22	09.11.2013	Sat	CCLP	A	Raynes Park Vale																			
23	16.11.2013	Sat	CCLP	H	CHESSINGTON & HOOK UNITED																			
24	23.11.2013	Sat	CCLP	A	Molesey																			
25	30.11.2013	Sat	CCLP	H	MOLE VALLEY SCR																			
26	07.12.2013	Sat	CCLP	A	Colliers Wood United																			
27	14.12.2013	Sat	CCLP	A	Wembley																			
28	21.12.2013	Sat	CCLP	H	WINDSOR																			
29	28.12.2013	Sat	CCLP	H	HORLEY TOWN																			
30	04.01.2014	Sat	CCLP	A	South Park																			
31	11.01.2014	Sat	CCLP	H	FARNHAM TOWN																			
32	18.01.2014	Sat	CCLP	A	Westfield																			
33	25.01.2014	Sat	CCLP	H	ALTON TOWN																			
34	01.02.2014	Sat	CCLP	A	Frimley Green																			
35	08.02.2014	Sat	CCLP	H	COVE																			
36	15.02.2014	Sat	CCLP	A	Hartley Wintney																			
37	22.02.2014	Sat	CCLP	A	Badshot Lea																			
38	01.03.2014	Sat	CCLP	H	MOLESEY																			
39	08.03.2014	Sat	CCLP	H	COLLIERS WOOD UNITED																			
40	15.03.2014	Sat	CCLP	A	Horley Town																			
41	22.03.2014	Sat	CCLP	H	ASH UNITED																			
42	29.03.2014	Sat	CCLP	A	Bedfont Sports																			
43	05.04.2014	Sat	CCLP	H	CAMBERLEY TOWN																			
44	12.04.2014	Sat	CCLP	A	Chessington & Hook United																			
45	19.04.2014	Sat	CCLP	H	SOUTH PARK																			
46	21.04.2014	Mon	CCLP	A	Croydon (1130)																			
47	26.04.2014	Sat	CCLP	H	HANWORTH VILLA																			
48																								
49																								
50																								
51																								
52																								
53																								